

*The Milestone  
Hotel*







# WELCOME TO THE MILESTONE HOTEL

**Voted No. 2 Hotel in the UK and entered into the TripAdvisor Hall of Fame at the 2015 TripAdvisor Travellers' Choice Awards, awarded Best Serviced Apartments by Condé Nast Johansens and named as a World's Best Boutique Hotel by Travel + Leisure magazine in their World's Best Awards**

The exquisite five-star Grade II Listed Milestone Hotel is located within the esteemed Royal Borough of Kensington and Chelsea, overlooking Kensington Palace and Gardens, minutes from the Royal Albert Hall and within easy access to the West End. Perfect for exploring London's many iconic attractions, The Milestone is also moments from an abundance of world-renowned shopping.

Enjoy fine British dining in Cheneston's Restaurant, unwind in the Stables Bar, relax in the sauna or heated resistance pool, sip cocktails in the Conservatory, or indulge in a delicious traditional English Afternoon Tea by the fire in the Park Lounge. Each of our luxurious rooms, suites and long-stay apartments have been individually designed and decorated with unique character and charm.

## FEATURES

- 44 guest rooms, 12 suites – all with marble bathrooms.
- Six two-bedroom apartments, two bathrooms, full kitchen, lounge and private entrance.
- Cheneston's Restaurant – fine dining.
- The Park Lounge – roaring fire, resident pianist, award-winning traditional Afternoon Tea.
- Stables Bar – intimate setting for delicious cocktails and nibbles.
- The Conservatory – ideal for relaxing drinks and private functions.
- The Windsor Suite – meetings and special occasions tailored to your specification.
- Wellbeing – resistance pool, gym, sauna and spa treatment room.
- Chauffeured Range Rover and Bentley on request.
- 24 hour Butler service.



**For enquiries or to make a reservation please call our dedicated reservations team:**  
Phone: +44 (0) 20 7917 1000 Email: [bookms@rchmail.com](mailto:bookms@rchmail.com) [www.RedCarnation.com](http://www.RedCarnation.com)





## CHENESTON'S

Deriving its name from an early spelling of Kensington, Cheneston's is our intimate and homely restaurant, offering the finest British cuisine. As you step in from the bustling city streets of Kensington you will be struck by the immaculately traditional décor, fine mahogany furniture, richly toned wood panelling and the abundance of natural daylight pouring in from the Victorian leaded windows.



## PARK LOUNGE

The Park Lounge is a warm and cosy retreat, with an open fireplace and sumptuous comfort with 'sink and stay' armchairs and sofas. It's the perfect place in which to enjoy an award-winning traditional Afternoon Tea. The views of Kensington Gardens allows an escape to the country, making it hard to believe you are in the heart of the capital.



## STABLES BAR

An intimate and unique hideaway, named after its original use as a carriage house, Stables Bar is one of London's great hidden bars with a club-like ambience. The bar is adorned with artwork and furnishing depicting traditional racing scenes. Sink into rich green leather armchairs or prop yourself up at the bar and watch as our bartender demonstrates his expertise in cocktail making.





## CONSERVATORY

Our bright and airy Conservatory, with its chic juxtaposition of sheer black and white, gives you the al fresco ambience with natural light pouring through the glass. With comfortable leather armchairs and sofas it is the perfect place to unwind.



## THE WINDSOR SUITE

The Windsor Suite is a wood panelled executive boardroom complete with a butler's pantry, full air-conditioning and an abundance of natural daylight. The Windsor is perfect for executive boardroom meetings and presentations as well as bespoke events such as wedding receptions and private dining.



## HEALTH CLUB

Escape from the hustle and bustle in The Milestone's luxurious Health Club. Enjoy an array of pampering, soothing, relaxing and rejuvenating spa treatments and beauty essentials using the finest quality products from SOTHYS, workout in the gym or take a dip in the resistance pool.





## *T*HE TUDOR SUITE

**Expect immaculate attention to detail, generous proportions and exquisite architecture in the Grand Master Suite.**

Beneath an ornate Tudor Rose ceiling and extraordinary glass chandelier, the beautifully designed king-size bedroom with a four poster bed and living area leads into an additional living room, distinctly inspired by the Tudor period between 1485 and 1603, with traditional rich oak panelling lining the walls. Perfect for accommodating families or entertaining friends or clients.

Using a colour palette of rich cream, beige and gold tones, the tastefully matching patterned fabric covered walls, carpets and bedspread showcase elegant Tudor style. Intricate features can be discovered on walls enriched with hanging tapestries and embroideries. With two fireplaces and comfortable, bespoke seating, a cosy ambience is achieved in a grand setting. Three large light-filled windows face the wonderfully quiet residential Kensington Court.





## *T*HE PRINCE ALBERT SUITE

**Grace, flair and regal sophistication embody this, our second Grand Master Suite. High ceilings, a private balcony and large sets of floor to ceiling windows allow streaming light to enter this corner suite from every angle.**

Three sets of French doors give access to a full width balcony with views over Kensington Palace and Gardens. A second secret balcony with a small seating area faces quiet Kensington Court.

A warm, inviting ambience is achieved through soft neutral tones of timeless beige, pale gold and understated patterns. Fresh white lilies complement dark furniture and an extravagant four poster wooden bed draped in opulent fabric takes pride of place. The suite is brimming with beautiful features including an extraordinary hanging tapestry spanning the length of an entire wall, tall gold candle stands and a feature fireplace. The spacious marble bathroom accommodates a corner bath and the largest walk-in shower in the hotel.





## THE REGENCY SUITE

**Grandeur, elegance and remarkable features characterise the Regency Suite. With enviable views overlooking Kensington Palace and Gardens and an exceptional free standing copper bath tub magnificently set behind a beautiful period screen, this unique Master Suite epitomizes refined Regency style. Inspired by the era between 1811 and 1820, it celebrates the accomplishments in fine arts and architecture attributed to this period.**

The colour palette embraces soft tones of sage green, grey, rich cream and a subtle combination of delicate pastels including a bold striped chaise longue and an ornate wooden four poster bed with original artwork depicting a traditional English countryside scene. With a treasure trove of original artefacts which may not be immediately apparent at first glance, the Regency Suite holds great appeal.





## THE VISCOUNT SUITE

**The Viscount Suite is as dignified as its name suggests. Stately yet comfortably contemporary, this spacious and light suite enjoys views from three large sets of windows overlooking Kensington Gardens.**

King Henry VI appointed the first Viscount (a title of nobility) in 1440, although today there are less than 300 Viscounts in the UK. A mixed colour palette of cream, brown and gold tones blends seamlessly with soft furnishings and artwork containing dashes of red, green, blue, yellow and subtle patterns creating a warm ambience that exudes elegance and romance.

An ornate, carved and painted four poster king size bed with draping curtains and a neutral fur throw is perfectly positioned to admire the views, with a luxurious velour chaise longue at the foot of the bed. Artwork depicting 'At The Concert' by Pierre Auguste Renoir 1880 hangs gracefully on the wall, reflecting nobility of past ages and sketches and drawings provide historical interest in costume and dress.





## THE HARLEQUIN SUITE

**The stage is set in the bold yet tastefully designed Harlequin Suite. Inspired by 15th Century pantomime, this luxurious suite reflects the mischievous nature of the Harlequin - a comical character typically masked and dressed in a diamond patterned costume.**

The striking theatrical feel is affably flaunted through the predominantly black and white colour scheme of the plush carpets, bedding and abundance of unique furnishings including French diamond-quartered bedside tables.

Exuberant elements of gold and glass complement the theme, with a large gold headboard and mirrored wall behind the bed and a stylish black glass chandelier suspending from the ceiling. A draping curtain reveals steps to the large 'backstage' dressing room, featuring high level windows and leads through to a magnificent, spacious black tiled marble bathroom.





## THE MISTINGUETT SUITE

**A beautifully appointed spacious suite, with light-filled floor-length glass doors leading onto a private terrace complete with a large Compass Rose stone table, chairs and loungers.**

Inspired by the French actress and singer Mistinguett (1875 – 1956), who made her debut at the Casino de Paris in 1895 and appeared in venues such as Moulin Rouge and Eldorado, this suite represents the elegance of French glitz and glamour with a playful air of sophistication.

Seamlessly blending rich colours of red, silver, grey and gold with mirrored glass, glittery pearl mosaics, sumptuous fur fabrics and unique French furnishings, the suite provides style and total comfort in equal measure. A king size bed with a rich theatrical red bedstead and walls adorned with Mistinguett sketches and original theatre posters depicting extravagant outfits continue the theme.





## DELUXE GUEST ROOMS

Each of the 44 Deluxe Guest Rooms are adorned with fine fabrics, fresh flowers, antique furnishings, and rare artworks. Each is a statement of colour and style, welcoming you with elegant individuality, comfort and luxury. Choose from Queen or King bedded rooms or a split-level deluxe studio, and discover plenty of thoughtful and personal touches to ensure your stay is one you'll remember. Some rooms enjoy wonderful views overlooking Kensington Palace and Gardens.

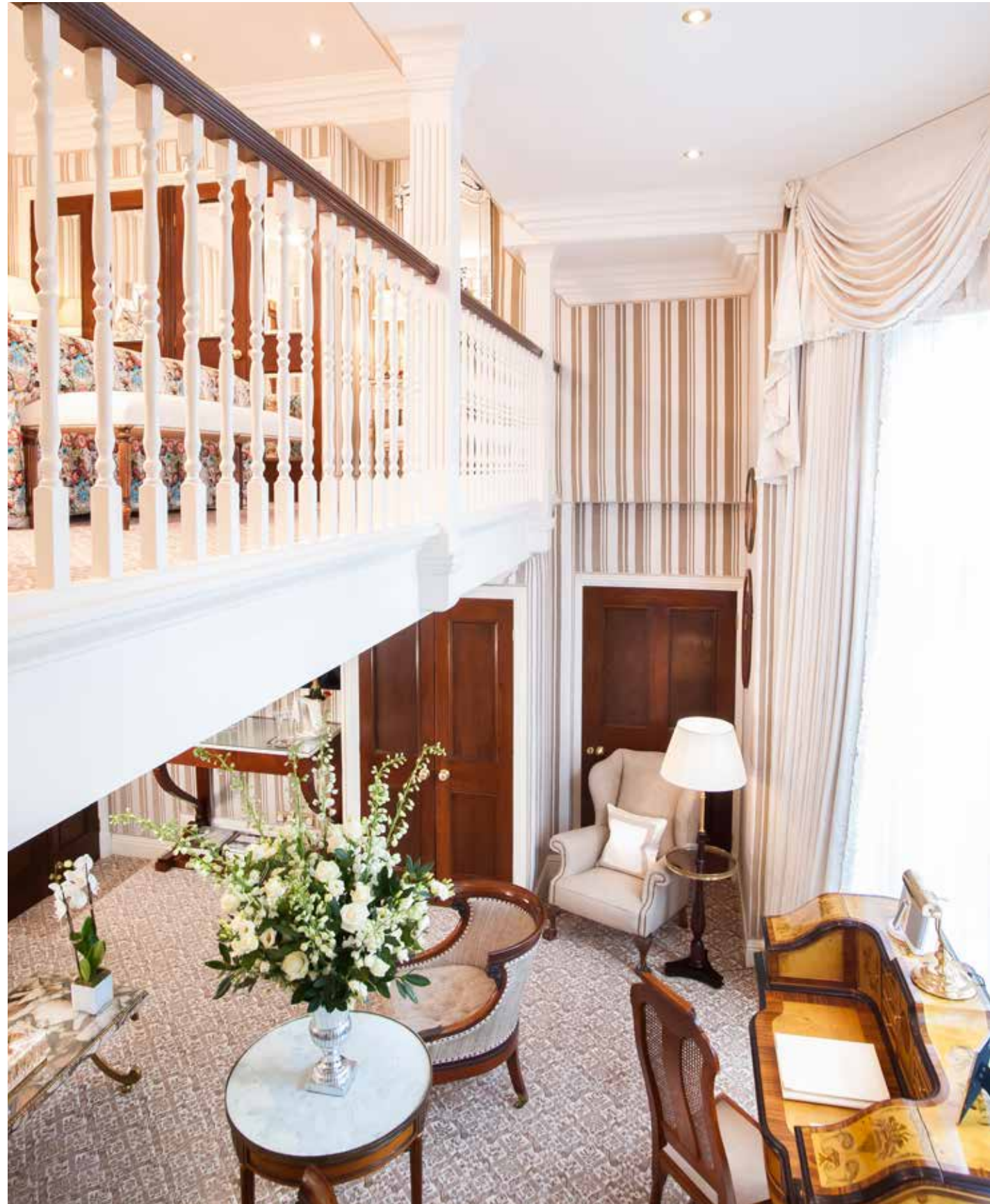
### Complimentary features:

- Bottled mineral water
- Complimentary High Speed WiFi
- iPod docking stations
- Daily newspaper
- Deluxe Penhaligon's toiletries
- Fresh flowers in all rooms
- Fruit plate or homemade cookies
- Pillow menu
- Iron and ironing board
- Hairdryers
- Magazines and books
- Plush bathrobe and slippers
- Electronic safes
- Twice daily maid service
- In-house music/movie libraries
- Welcome beverage on arrival
- Weather forecast card
- Hot water bottle on request
- Floating votive candles at turndown
- Mobile phone rental
- Female friendly services include 24 hour security
- 24 hour room service\*
- Mini bars\*

### A sample selection of additional amenities available:

- Adapters/converters
- Clothes brush
- First aid kit
- Fridge
- Magnifying glass
- Luggage strap/tags/locks
- Reading glasses
- Shoe cleaning kit
- Umbrellas
- Shoelaces
- Cufflinks
- Feminine hygiene products
- Make up remover
- Contact lens solution
- Hair straighteners
- Dental kit
- Yoga DVD and mat
- Personalised business cards
- Ipad and iPad hire
- Memory card/stick
- Children's toys, highchairs, nappies
- Babysitting service – Hotel Nanny
- Cots, bibs, baby monitor
- Pet services





## *T*HE KENSINGTON GARDEN SUITE

The magnificent front-facing views of Kensington Gardens are drawn into this sizeable split level suite through large floor-to-ceiling bay windows where traditional design with neutral stripes and shades of white, together with elegant soft furnishings and impressive artwork create a feeling of being in a grand country manor house rather than in the heart of the city.

Accessible from each floor, the lower level provides an idyllic lounge in which to relax, entertain or accommodate a third person. An antique writing desk and a bespoke custom-made sofa are positioned to make the most of the palace views.

With an air of romance and femininity, the custom Wiltons carpet continues to sweep up the curved staircase to the bedroom, where statement Roberto Cavalli bed linen adorns the bed. A luxurious white marble modern bathroom compliments the fresh, bright interior.



## THE SAFARI SUITE

Step into the splendour of the Safari Suite where you will feel transported to a sumptuous setting in the heart of the wilderness. Drawing on our close connections with South Africa, the suite incorporates features you may expect to find in the most luxurious Safari camp, including a remarkable canvas canopy adorning the ceiling and a large bed draped in curtains of natural earthy tones below. The warm colour palette consists of wonderful deep shades of green, brown, gold and orange which complements the dark wood furniture, animal print fur fabrics, exceptional original artefacts and artwork including 'An African Elephant and Her Calf' by renowned wildlife artist Jonathan Truss. The feeling of space in this large corner suite (which can accommodate an additional rollaway bed) is enhanced by the adjoining dressing area with woven rattan furniture and numerous windows looking out over Kensington Palace and Gardens.

## THE MARGARET ROSE STUDIO

The Margaret Rose is one of eight Deluxe Studio rooms and is one of our most serene rooms, beautifully decorated in an elegant colour palette of light grey and antique gold. This is a split-level room which offers the benefit of a comfortable seating area on the lower level with views over Kensington Palace Gardens.

Complete with day bed/sofa in the lower section, this popular and spacious studio boasts two wall-mounted TV's, stunning contemporary artwork and will comfortably accommodate a family of three.



## THE MATISSE STUDIO

On entering The Matisse Studio, there is a flight of 4 steps that leads down into a spacious bedroom exhibiting crisp, clean lines in white with accents of light blue. The focal point of this room is the statement sleigh bed which nestles against a fully mirrored wall, creating a wonderful feeling of space and light.

Signature antique cream desk and elegant French chest of drawers complete the furnishings, with Matisse "silhouettes" adorning the walls. Original Victorian leaded windows look out onto Kensington Court. This is a stylish studio that will appeal to those with a love of fine art and culture.

## THE VENETIAN SUITE

This spacious suite represents Venetian style that both soothes and captivates. Beautifully designed using classic duck egg blue, delicate turquoise and warm cream hues, the colours flow softly throughout the bedroom and living areas resembling the waterways of Venice. Overlooking the conservatory, a row of four sets of windows span the entire length of the suite and are dressed with sumptuous striped and tasselled curtains, indicative of traditional Venetian style. Striking gold pelmets rest proudly above, creating a sense of grandeur and pale blue and gold coloured carpets complement the theme. Art and culture enthusiasts will enjoy discovering the array of Venetian artwork found throughout the suite depicting traditional cityscapes, the famous Grand Canal and decorative handheld fans. Comfortable seating upholstered in exquisite Venetian velvet provides the perfect place to relax, with a traditional mirrored coffee table reflecting the region's rich history in glassmaking of the finest kind.





## APARTMENTS

### *V*ICTORIA AND ALBERT

The striking split level Victoria & Albert apartment features a spacious lounge decorated in elegant neutral tones of coffee, patterned gold, hints of aqua, sage green and complemented with dark wood furniture. You'll find a 40 inch flat screen TV, a traditional brown Chesterfield sofa, two comfortable armchairs, a small desk, elaborate gold mirrors and a feature fireplace. The lounge benefits from three large sets of windows overlooking Kensington Court and space to accommodate two rollaway beds if required. From the hallway a curved staircase leads downstairs to two beautifully styled bedrooms and an open plan kitchen with dining area seating four comfortably.

### *W*ILLIAM & CATHERINE

The William and Catherine apartment offers a spacious lounge, decorated in a cream and mocha colour scheme, with a 10 metre balcony offering views to Kensington Palace and Gardens. The lounge includes seating for five and a child's day bed, as well as an open plan kitchen and dining area. Both bedrooms, decorated in a soft colour palette comprising cream, beige and gold, have a 26" TV, one with access to a private balcony and the other with incredibly high ceilings. With two bathrooms and a separate guest lavatory with a utility area with washer and dryer, this apartment has generous proportions.



### *T*HE EDWARDIAN

The elegant Edwardian Apartment is an ideal family option with a sofa bed in the traditionally styled red and gold lounge for two children plus two thoughtfully designed bedrooms with king size beds. The lounge seats four, with a 32" TV and an open plan kitchen and dining area. Both bedrooms, decorated in red and gold and yellow and gold, have a 26" TV and their own ensuite bathroom. There is also a separate guest bathroom.

### *K*ENSINGTON COURT

The Kensington Court apartment is designed on one level and has a separate kitchen. The sizeable lounge, decorated in a red and gold scheme has seating for five and includes a sofa bed for one adult or two small children. It also offers a dining area for four and a feature fireplace. Three sets of large windows overlook Kensington Court. Both bedrooms have a 26" inch TV and one also has an ensuite bathroom. Both have a stylish red and cream colour scheme. The apartment also benefits from a second bathroom off the hallway.

### *R*OOFTOPS

Rooftops is an impressive split-level studio style apartment, decorated throughout in calming blue and white, and has a third studio bedroom on the mezzanine level complete with an ensuite bathroom with a sunken bath and ceiling windows, ideal for a teenager who wants their own space. The lounge, complete with a fireplace and two blue sofas, has seating for five people and a dining area for four that joins an open plan kitchen. The lower level bedrooms have French doors with access to a delightful roof top terrace which can seat up to six people.



THE  
RED CARNATION  
HOTEL COLLECTION



[www.redcarnation.com](http://www.redcarnation.com)